


1 Gbps Unlicensed Band Radio ion4xle

5.1 to 5.9 GHz, 1 Gbps Single Radio UBR
with option for External Antenna




IO enterprise/carrier grade P2P series is designed to serve highly critical applications in a wide range of unlicensed 5 GHz spectrum.

Ease of Installation

- 

Plug-and-Play

The plug-and-play model ensures effortless deployment. Whether redeploying or setting up a new remote site, simply input the IP address, and the radio will automatically fetch the server and intended configuration. This helps in quick and seamless set-up with minimal manual intervention.
- 

LED & Buzzer Support

According to the LED blink pattern and buzzer sound, the rigger can align its position based on signal strength. Wireless experts traveling to the field for site installations may not be necessary, saving field deployment costs.

Adaptive RF Technology

- Adaptive RF technology refers to the sophisticated approach that combines Artificial Intelligence (AI) Algorithms with Radio Frequency (RF) systems to optimize wireless communication performance in real time. By leveraging AI, the system can intelligently adapt and adjust various RF parameters to enhance signal quality, coverage, and overall network efficiency.
- Automatic Channel Selection (ACS):** When deploying a new network or adding new devices, it allows the radio to select the best channel automatically and intelligently for transmitting and receiving data.
- Dynamic Data Rate Selection (DDRS):** Switches to the subsequent possible modulation in case of site-specific interference.
- Automatic Transmit Power Control (ATPC):** Automatically adjusts Tx power based on the link distance.
- Dynamic Channel Selection (DCS):** Allows the radio to continuously monitor the wireless environment and automatically adjusts the operating channel based on real-time environmental conditions.



IP67 Certified



Supports wind load
up to 180 kmph



Sustains in challenging
weather conditions and
extreme temperature
(-40 °C to 55 °C)



Indoor/Outdoor PoE to
support 4kV surge
protection and enhanced
6kV using external SPD
(Surge Protection
Device)

Advanced Technology Support



Dying Gasp

Improves network reliability as it sends a final notification before the device loses its power or shuts down. It save significant time and effort of the operations team for troubleshooting by providing critical information about the device's status and reason for shutdown.



GPS

A GPS-enabled system enables planning from a central location to check feasibility & new installation.



Temperature Sensor

Continuously monitoring the radio temperature and setting threshold alarm levels, helps in proactive management to prevent potential damage, ensuring smooth operations.

Security

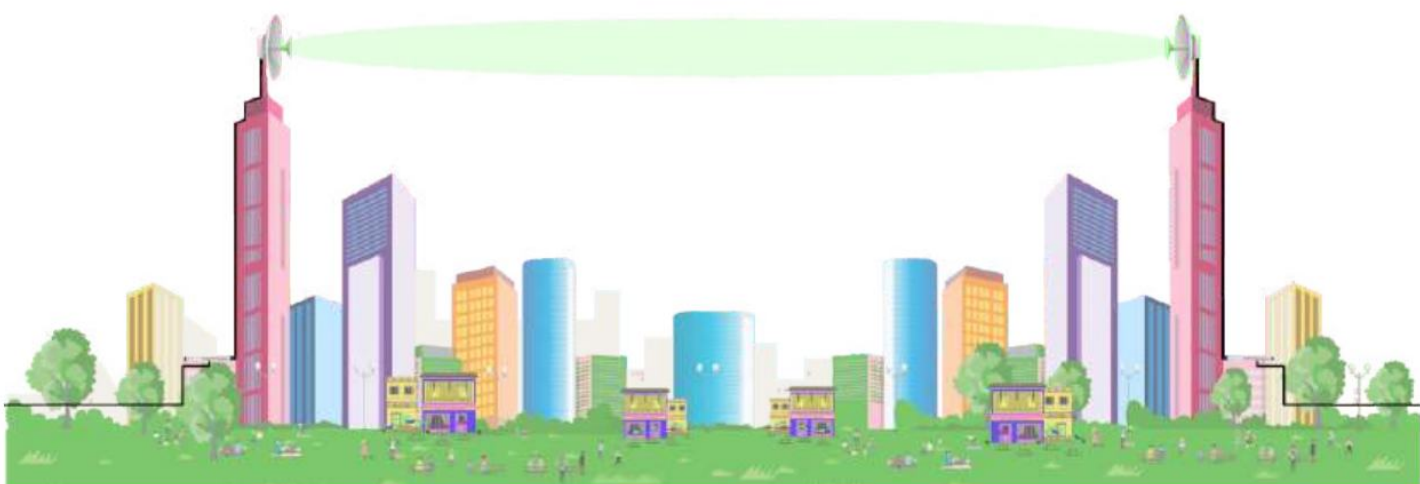
Our Radio supports AES-256 to provide a robust encryption format in wireless media. Evading unwanted threats in the wireless communication ecosystem.

Wireless MAC Access
Level Control

SSID lock with WPA2/3
Support

P2P Link

Connects two locations together through line of sight (LOS).



Rich Feature Set

Software designed to meet all types of customer requirements.

- Supports both IPv4 & IPv6 addressing
 - Supports jumbo frame size up to 9000 MTU
 - Supports 4 Level Priority quality of service (QoS) as per IEEE 802.1e WMM
- Voice
 - Video
 - Best Effort
 - Background
- Flexible VLAN features such as Q-in-Q, Access, Trunk, Transparent, and management VLAN
 - Redundant Link Switching supports 1+1 & 2+0 deployments with very less switching time
 - Arp and Bridge table allows to view the data and it comes with the option to clear and or refresh
 - Supports Network Time Protocol (NTP) Client Application for synchronizing the clock to the network time server

P2P Scheduler

- Effective wireless algorithm to deliver up to 1 Gbps aggregate throughput
- Better latency and jitter value to provide an excellent customer service experience
- UL/DL Configuration based control for deploying P2P links

ion4xle

UBR with option for External Antenna



5.1 to 5.9 GHz, 1 Gbps Single Radio UBR with Option for External Antenna

Wireless

Access Technology	OFDMA
Radio Mode	2x2 MIMO with 1024 QAM Support
Radio Frequency Band	5 GHz channel support (5.1 to 5.9 GHz, country-specific restrictions apply)
Peak throughput	Up to 1 Gbps aggregate UL/DL throughput
Max Transmit Power	27 dBm for 5 GHz (will depend on country-specific guidelines)
Channel Size	20/40/80 MHz
Modulation Schemes	Supports upto 1024 QAM
Processor	Qualcomm based chipset
Access RF Power	Automatic transmit power control (ATPC) for enhanced adaptability to the changing environment
Power	IEEE 802.3at 48V
Max Power Consumption	<15 W (max.)
Interface	1 X 10/100/1000 BASE-T Ethernet
Antenna	UBR with option for External Antenna
Receiver Sensitivity MCS 0	-84 dBm @ 80 MHz -87 dBm @ 40 MHz -90 dBm @ 20 MHz

Security Features

Security	WPA, WPA2, WPA3 - Personal and Enterprise and 256-bit AES PSK with hardware acceleration WAN Protocols: Static IPv4/v6, DHCP client v4/v6 Management: Standalone (via GUI) or through appliance-based EMS or cloud-based Smart Spectrum Management: Active scan; monitors/logs ongoing RF interference across channels (no service impact); Dynamic auto optimization of channel and Adjustable upstream/downstream bandwidth ratio
High Level Features	QoS: 802.11e WMM Y. 1731 - BNM (Bandwidth Notification Message) Support¹ IEEE 802.1ag - Service level OAM¹ Device level firewall features like L2/L3 Broadcast/Multicast White/Black Listing Port/Mac/IP/Protocol based White/Black Listing Two-Way Active Measurement Protocol (TWAMP): Enables measurement of round-trip network performance of links In-built temperature sensor* In-built buzzer* Dying Gasp* GPS Location: GNSS-1 (GPS + GLONASS)*

Physical and Environmental

Dimensions	209 x 125 x 72 mm or 8.23 x 4.92 x 2.83 in
Weight	0.8 kg
Mounting	Pole mounting Weight: 0.3 kg
Visual Indicators	Link, Alarm, & Power LEDs

Operating Temperature	Commercial: -10° C to 55° C Extended: -40° C to 55° C
Operating Humidity	5 to 95% (non-condensing)
Operating Altitude	As per QM333 (3050 meter/10000 feet)
Wind Sustainability	180 km/hour (sustained winds)
Certifications	FCC Class A, CE, MTCTE, RoHS 3.0
Outdoor Ingress Protection Rating	IP67

Safety & Other Compliances

- Safety standard as per IEC/EN 62368 IEC60950 & IEC 60215
- Electrostatic Discharge Immunity as per IEC 61000-4-2, Contact L2 and Air Discharge, L3 Level
- DC Surge Immunity as per IEC 61000-4-5, Level 2 (power port + signal port)
- Electrical Fast Transient/Burst Immunity as per IEC 61000-4-4, Level 2
- Radiated susceptibility as per IEC 61000-4-3 Level 2
- Conducted Susceptibility as per IEC 61000-4-6, Level2
- Bump and vibration as per QM333
- Radiated Emission as per CISPR 32 Class A
- Conducted Emission as per CISPR 32 Class A (power port+signal port)
- Voltage Variation: AC- as per IEC 61000-4-11 and DC- as per IEC 61000-4-29
- Health Test as per IEC/EN62311

Ordering Information	
Model No.	Description
ion4xle	IO 5 GHz 1000 Mbps UBR with option for External Antenna
ion4xle_ext	IO 5 GHz 1000 Mbps UBR with option for External Antenna [extended temperature]

Note : *Customize hardware options are available. Please reach out to Sales Team for more information

¹In Roadmap – Future Software Upgrade

Last Updated March 22, 2024



Email: iosupport@hfcl.com
Website: hfcl.com | io.hfcl.com
Office: 8, Commercial Complex, Masjid Moth, Greater Kailash II, New Delhi 110048